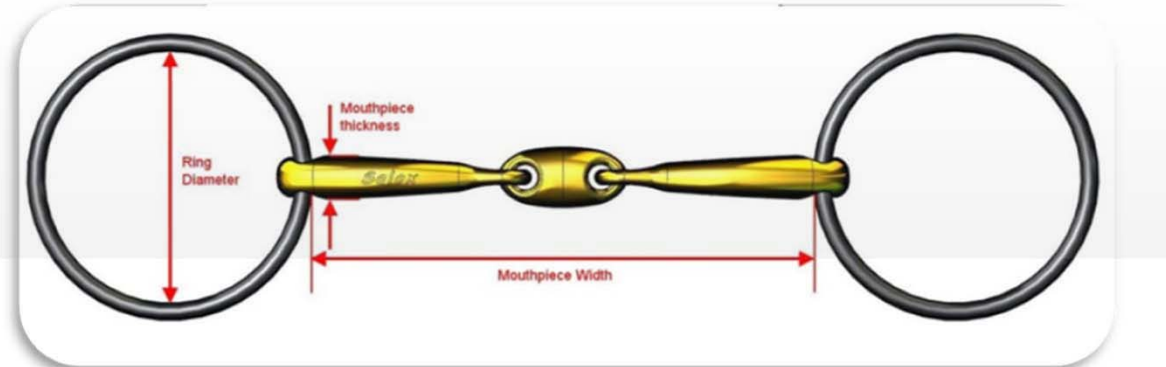


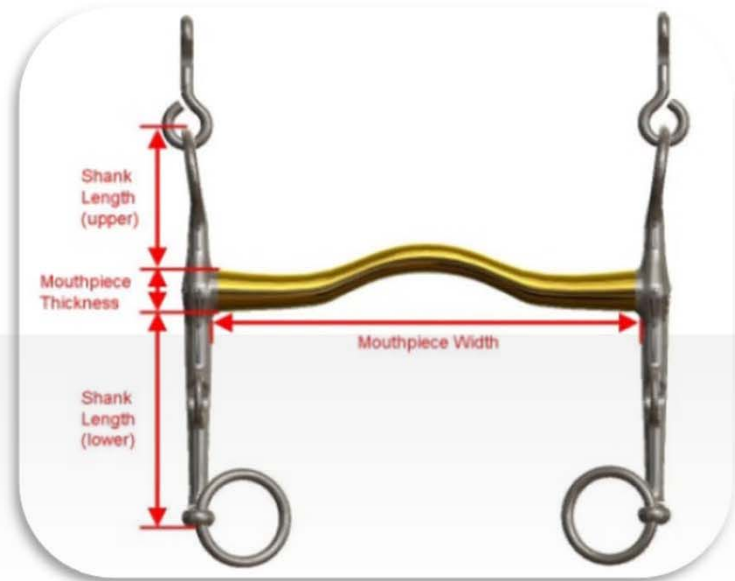
# MEASURING YOUR BIT



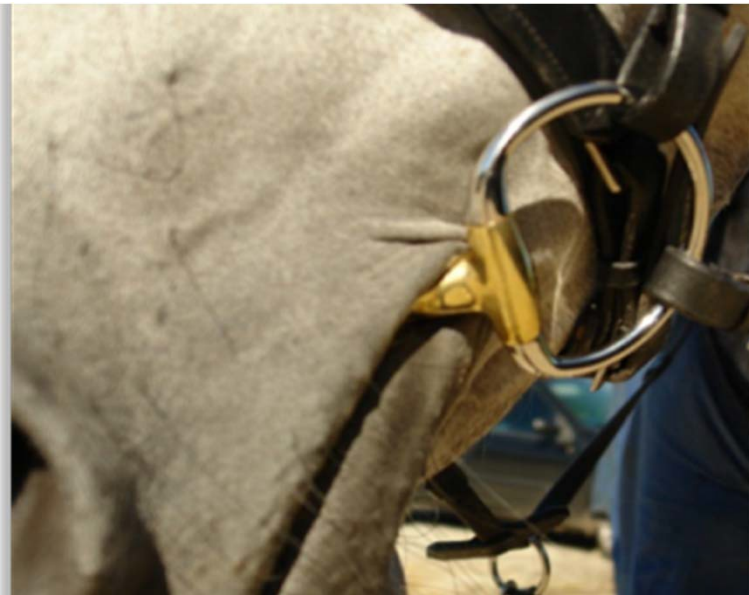
## Attention:

The sizes given on the wrapping of other brands are often measured in a different way.

Please verify the size of your current bit according to this scheme before ordering !



# A CORRECTLY FITTING BIT



A snugly fitting Fixed Cheek.



Loose Ring with 3mm clearance from the hole to allow sliding

## **Note:**

to ensure a correct fit, a Loose Ring bit (snaffle or bridoon) should always be chosen a little wider (6-7mm) than a Fixed Cheek bit (e.g. Eggbutt, Weymouths are also in this category!)